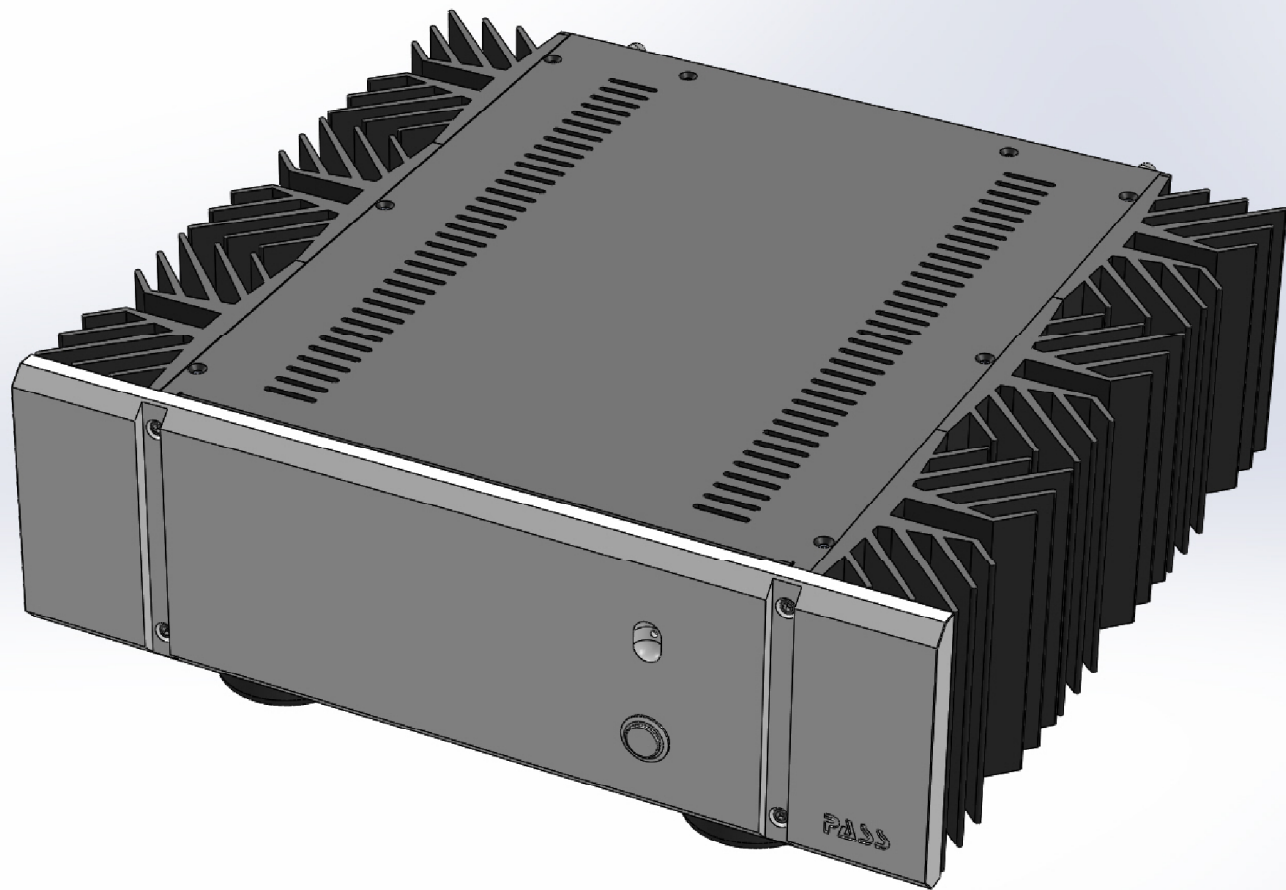


PASS[®]



XA25

25W Single-Ended Stereo Amplifier

Pass Labs XA25 Power Amplifier

At Pass Labs we build Fet amplifiers with excessive output stages, huge heat sinks and massive power supplies. We use the highest quality components in simple linear topologies, assembled and tested with care and subtlety in Auburn, California. They measure well, sound great, and are reliable. Twenty years of ongoing innovation have kept the X and XA amplifiers at the forefront of high-end audio.

The XA25 embodies all this and less. A smaller stereo Class A amplifier at a lower price, it takes advantage of the lower power requirements to have simpler single-ended circuitry and fewer parts in the signal path. This also allows elimination of degeneration, “that other negative feedback” in all stages.

Simpler and fewer gain stages improves speed and stability. Lower voltages means the ability to run gain devices at higher bias currents, more deeply into Class A.

Newer power Fet technology replaces banks of parallel small transistors with a single pair of industrial devices, each having a 700 watt / 40 amp rating. With no current-hogging issues and a new constant-current bias circuit to compensate for temperature drift, they connect directly to the loudspeaker without ballast resistors for lowest possible distortion and highest damping factor.

No degeneration also increases the efficiency and Class A operating current, allowing greater Class A operation into low impedance and reactive loads. The simple front end circuit uses two pairs of NOS complementary Fets in common-source mode in a current feedback (CFA) configuration. The amplifier is direct coupled and has no DC servos or frequency compensation.

As with all Pass amplifiers, the technology and construction are strictly in the service of the listening experience. The XA25 measures superbly, but its subjective qualities are most special. In an industry where products with great specs are often found to be dry and boring, this amplifier breathes new life into the music.

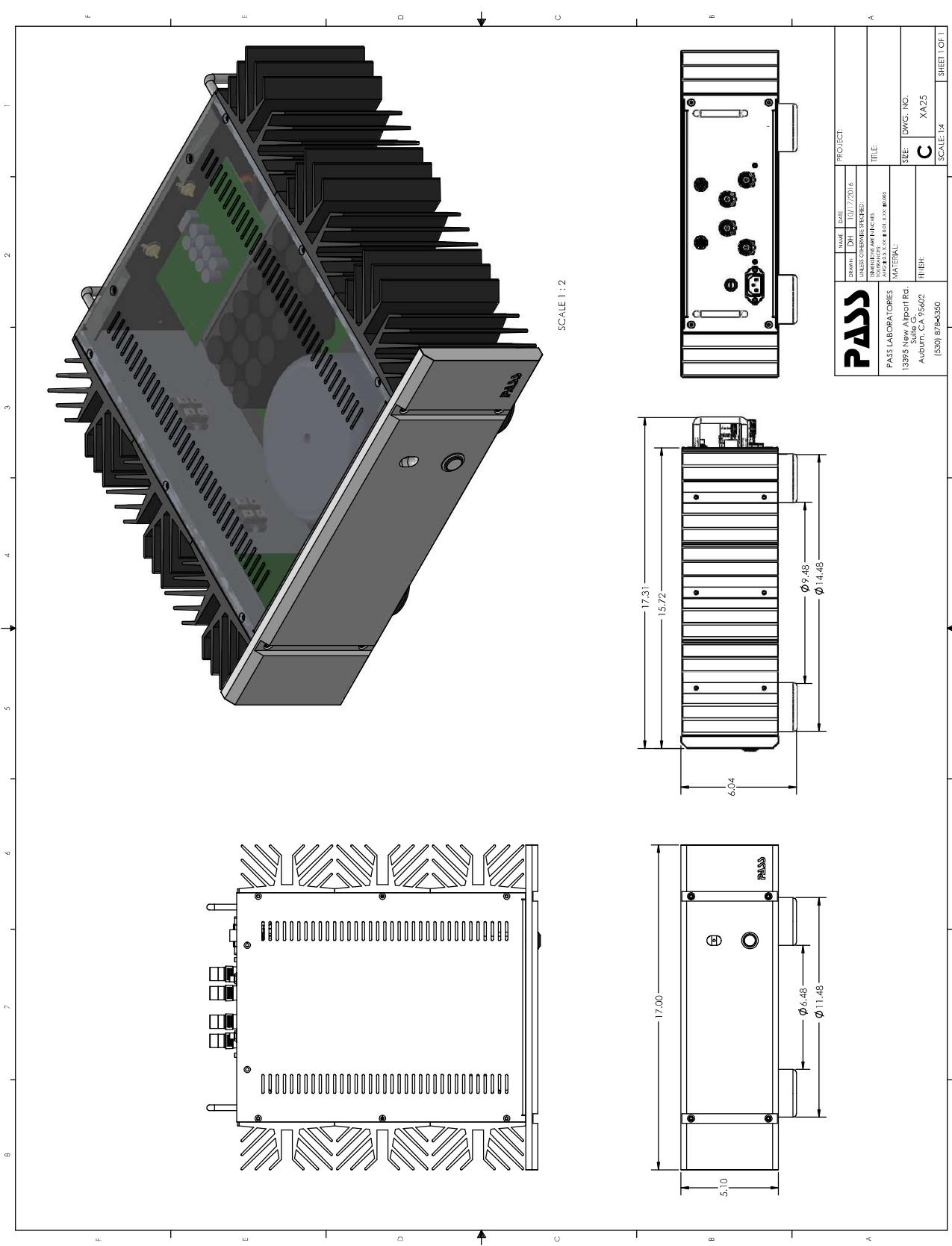
XA25 Preliminary Specifications

Output power:	25 Watts Class A @ 8 ohms 50 Watts Class A @ 4 ohms 100 Watts Class A/AB @ 2 ohms
Distortion:	0.1% @ 25 Watts, 8 ohm, 1 KHz 0.1% @ 50 Watts, 4 ohms, 1 KHz
Freq. Response:	DC to -3 dB @ 200 KHz
Gain:	20 dB gain
Noise:	Output 100 uV unweighted 20 to 20 KHz
Damping Factor:	200
Slew:	100 V/uS
Input Impedance:	47 Kohm
Peak Current:	10 Amp output (200 Watts into 2 ohms) Independent of loudspeaker load phase.
Idle Power draw:	200 Watts total.
Dimensions:	17"W x 17.375"D x 6"H
Weight:	approx. 55 lbs

“Pass”, “**PASS**”, “Pass Labs”, “Pass Laboratories”, Supersymmetry”, “Aleph”, and “Zen” and are all registered trademarks of Pass Laboratories, Inc., and all rights thereto are protected by law.



Pass Laboratories Inc.
13395 New Airport Rd., Suite G, Auburn, CA 95602
voice: 530.878-5350 - fax: 530-878-5358 - web: passlabs.com



PASS		NAME	DATE	PROJECT:	
PASS LABORATORIES		DRWING	10/17/2016		
13395 New Airport Rd.		UNLESS OTHERWISE SPECIFIED:		TITLE:	
Auburn, CA 95602		DRAWING BY: J. H. H. H.		SHEET: DWG. NO.	
(530) 878-5350		MATERIAL:		C	
		FIBER:		XA25	
		SCALE: 1:2		SHEET 1 OF 1	